

Ikegami

GIVING NEW VALUE TO IMAGES

HYPER[®] *HDYNAMIC*

Hyper Wide Light Dynamic

Colour Camera Series



*Hyper Wide Light Dynamic,
Super Cube Colour Camera*

ISD-A10

*Hyper Wide Light Dynamic,
High Sensitivity Colour Camera*

ISD-A20

*Hyper Wide Light Dynamic,
High Resolution and High Performance
True Day / Night Colour Camera*

ISD-A21

Hyper Wide Light Dynamic DPS Dome Colour Camera

ISD-A30

*Vandal Resistant Hyper Wide Light Dynamic
DPS Dome Colour Camera*

ISD-A31



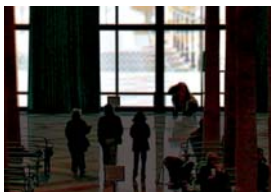
Hyper Wide Light Dynamic Colour Camera Series

As the newest addition to the Ikegami Hyper Dynamic Camera Series employs an extremely wide light dynamic range enabled by the newest Pixim DPS technology and Ikegami's digital processing technology. It is a Hyper Wide Light Dynamic Range Camera that reproduces a clear and natural image even in locations where there is a significant difference in the intensity of illumination, such as window areas, or in lobby entrances of buildings.

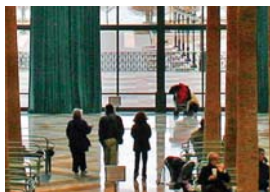
Hyper Wide Dynamic range

The Pixim DPS (Digital Pixel System) sensor combined with Ikegami's original digital processing technology enables a 95dB extremely wide dynamic range. The joining of these two technologies allows for the reproduction of the clearest and most natural images. It also resolves the unnatural Picture Shake that is often seen in Non-DPS wide dynamic range cameras.

Entrance scene



Conventional type camera



ISD-A Series

Casino scene



Conventional type camera



ISD-A Series

View from inside of ATM



Conventional type camera



ISD-A Series

No Vertical Smear

Because the camera utilizes a DPS non CCD Sensor, there is no vertical smear. It is capable of capturing an object, without vertical pixel overload, in strong direct light such as vehicle headlights while parked or moving on the road.



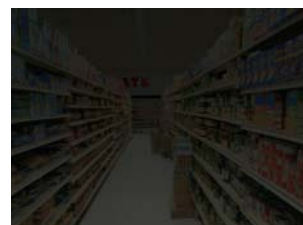
Conventional type camera



ISD-A Series

Electronic Sensitivity Control Function

As the ISD-A Series are equipped with an electronic sensitivity control function of up to 32 times, it covers the scene which requires high sensitivity.



Conventional type camera



ISD-A Series

Additional Functions

It is selectable a monitor display mode which delivers optimum video picture in accordance with a CRT monitor or a LCD monitor. (Not on ISD-A10)

The ISD-A Series features functions such as an intelligent back light compensation (BLC) with sensing area control function,

various automatic white balance controls, Digital noise reducer, Optimum monitor select function for CRT type or Flat display type (Not on ISD-A10), two-way auto-iris control function, and AC line lock or internal lock selection, all essential in monitoring applications.

Local Setup Functions

Camera ID, AGC On and Off, LL/INT Sync selection and phase adjustment, Auto white balance for ATW/ATWex/AWC/Manual Selection and adjustment, Hyper wide dynamic range level, Iris level, Electronic Sensitivity control On and off, BLC Spot area

setting, Detail level management, Chromatic level control and Day/Night mode selection (only ISD-A21) and thresh-hold control can be made on OSD at rear panel (ISD-A10/A20/A21). ISD-A30/A31 are controlled on OSD by the external setup board.

Hyper Wide Light Dynamic, Super Cube Colour Camera

ISD-A10

■ Compact body of Super Cube

The ISD-A10 comes with a compact body of just W64 X H64 X D61.5 mm, giving it the flexibility for a broad array of locations and equipment, such as ATM machines and outdoor housings.

■ Superior Picture Quality

The camera delivers 480 TV lines of horizontal resolution with a signal-to-noise ratio of over 50 dB. It boasts superior picture quality and allows for the reproduction of clear colour images.



Hyper Wide Light Dynamic, High Sensitivity Colour Camera

ISD-A20

■ The ISD-A20 delivers 480 TV lines of horizontal resolution with a signal-to-noise ratio of over 50 dB. It boasts superior picture quality and allows for the reproduction of clear colour images.

■ It achieves a minimum object illumination of 0.5lux / F1.4 (0.37lux / F1.2). In addition, the camera is equipped with an electronic sensitivity control function of up to 32 times and it is able to capture an image with a light level as low as 0.015 lux / F1.4 (0.012lux / F1.2).



Hyper Wide Light Dynamic, High Resolution and High Performance True Day / Night Colour Camera

ISD-A21

■ The ISD-A21 delivers 520TV lines of horizontal resolution with a signal-to-noise ratio of over 50 dB. It boasts superior picture quality and allows for the reproduction of clear colour images.

■ It achieves a minimum object illumination of 1lux / F1.4 (0.75lux / F1.2) in colour and 0.1lux/F1.4 (0.75lux/F1.2) in monochrome. In addition, the camera is equipped with an electronic sensitivity control function of up to 32 times and it is able to capture an image with a light intensity as low as 0.03 lux / F1.4 (0.023lux / F1.2) in colour and 0.003lux/F1.4 (0.0023lux/F1.2) in monochrome.

■ Not only does the ISD-A21 produce a high quality daytime colour image, but also a clear night time monochrome image is delivered due to the True Day /Night change-over system by which it changes to a monochrome mode automatically in low light conditions. It also can be controlled by a switch through external sensors, etc.



Color mode



Monochrome mode ★

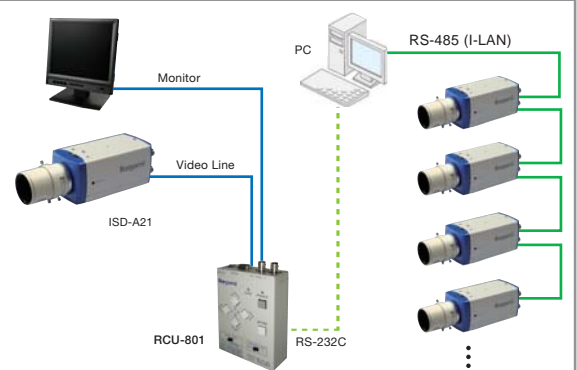
Remote Setup Function iLAN

Remote controlled on OSD by I-LAN over RS-485 link.

It is available to set up by optional remote set up unit RCU-801.

New Remote Control Unit, RCU-801 Coax Remote or RS-232C Remote

This unit is a control box for camera setups for various parameters using OSD, On-Screen-Display. And not only conventional Video coax cable connection controls, but also the provision for RS-232C link application is on. This DC12V or AA Battery operated control box makes camera setup and adjustment work very easy and effort-less even in difficult places for camera installation.



HYPER DYNAMIC Dome Type Colour Camera Series

Model ISD-A30 is the dome camera of the same Hyper Wide Light Dynamic Colour Camera Series. The polycarbonate vandal resistant type is available as ISD-A31.

3-Axis

The ISD-A30/A31 provides 3 Axis adjustable of Plus/Minus 50 degree Up and Down, Plus/Minus 50 degree Slant and 360 degree rotation Angle in a shapely Dome type housing.

Lens Type

1. Focal Distance f2.6-6mm (Type 26)
2. Focal Distance f4-9mm (Type 49)
3. Focal Distance f9-22mm (Type 92)

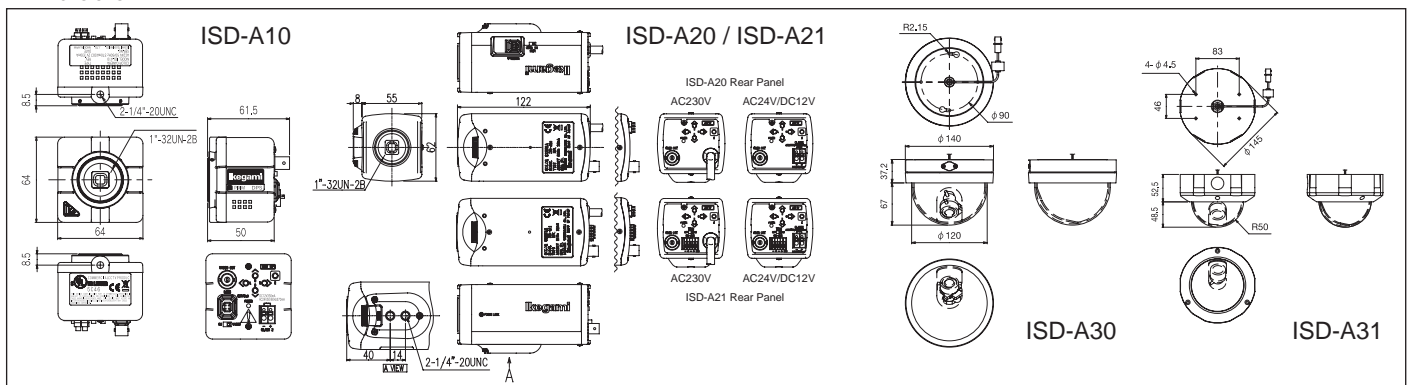


Hyper Wide Light Dynamic Colour Camera Series

Specifications

	ISD-A10	ISD-A20	ISD-A21	ISD-A30	ISD-A31	
Image Sensor	1/3 inch PIXIM DPS Sensor					
Pixel Numbers	720(H) X 540(V), 390,000 pixels approx.					
Scanning System	PAL: 625 lines at 50Hz, 2:1 interlace, NTSC: 525 lines at 60Hz, 2:1 interlace					
Sync System	Crystal controlled internal Lock or AC Line-Lock, Selectable					
Video Output	VBS 1.0Vp-p/75 Ω					
Horizontal Resolution	480TV Lines or better		520TV Lines or Better		480TV Lines or better	
S/N Ratio	50dB/rms, or better					
Minimum Illumination	1 lux/F1.4, 0.75 lux / F1.2 Hyper AGC ON[50IRE]	0.5 lux/F1.4, 0.37 lux / F1.2 Hyper AGC ON[50IRE]	Colour : 1 lux / F1.4, 0.75 lux / F1.2 Hyper AGC ON [50IRE] Monochrome : 0.1 lux / F1.4, 0.075 lux / F1.2 Hyper AGC ON [25IRE]	0.8 lux [50IRE] AGC ON		
	Electronic Sensitivity Control On, Max. 32 times multiplication					
	0.03 lux/F1.4, 0.022 lux/F1.2 [50IRE]	0.015 lux/F1.4, 0.012 lux/F1.2 [50IRE]	Colour : 0.03 lux/F1.4, 0.022 lux/F1.2 Hyper AGC ON [50IRE] Mochrome : 0.003 lux/F1.4, 0.0022 lux/F1.2 Hyper AGC ON [25IRE]	0.025 Lux [50IRE]		
White Balance Control	Built-in, ATW / ATE-ex / AWC / Manual, Selectable					
Hyper Wide Dynamic Range Control	Built-in, 36 Steps Level Adjustment					
AGC	Built-in, ON (AGC, Hyper AGC) / OFF (LOW, MID, HIGH) Selectable					
Electronic Sensitivity Control	Built-in, Max. 32 times multiplication					
Digital Noise Reduction	————	Built-in, On or Off Selectable				
Monitor Output Selection	————	Built-in for either CRT type or LCD type				
Day/Night Change over	————	Built-in, Auto / Manual Selectable			————	
Iris Level	Built-in, Level Adjustment				Built-in, DC Iris Level Adjustment	
Auto Iris Function	Video Iris or DC Iris Switchable					
Camera ID Function	Built-in (1 line 24 Alphanumeric characters)					
Lens Mount	CS Mount (optional C-Mount Adaptor can be used)			————		
Lens Flange Back	Built-in and Adjustable					
Built-in Lens (Focal Distance, View Angle)	————			Focal Distance	View Angle	
					Wide	Tele
				f2.6-6mm	H106.0°~ V78.2°	H47.6°~ V35.8°
				f4-9mm	H71.0°~ V51.8°	H31.6°~ V23.6°
Pan/Tilt Adjustment	————			f9-22mm	H30.6°~ V22.6° H13.0°~ V9.8°	
				Up and Down/Slant: ±50°, Rotation: 360°		
Power Requirement	AC24V ±10% (50Hz/60Hz) DC12V (10.5V ~ 15V)	AC230V ±15%, 50 Hz AC24V ±10% (50Hz/60Hz) DC12V (10.5V ~ 15V)		AC24V ±10% (50Hz/60Hz) DC12V (10.5V ~ 15V)		
Power Consumption	AC24V : 5.2W approx DC12V : 4W approx	AC230V : 3.2W approx. AC24V : 3.2W approx DC12V : 3.0W approx	AC230V : 3.7W approx. AC24V : 3.7W approx DC12V : 3.5W approx	AC24V : 2.8W approx DC12V : 2.4W approx		
Operating Temperature	-10°C ~ +50°C (No condensation)					
Camera Mount	1/4"-20UNC x2 (Upper and Bottom)	1/4"-20UNC x2 (Upper or Bottom, Selectable)			————	
Dimensions	W64 X H64 X D61.5mm	W62 x H55 X D122mm			ø140 x H104.2mm ø145 x H101mm	
Weight	350g approx.	AC230V : 660g approx. AC24V/DC12V : 420g approx.			570g approx. 1160g approx.	
Input/Output Connector	Video output : BNC Lens Iris Control : 4P (plug:E4-191J-150 type) AC24V/DC12V Input : 2P push-in type terminal		Video output : BNC Lens Iris Control : 4P (plug:E4-191J-150 type) AC24V/DC12V Input : 2P push-in type terminal RS-485 Input/Output : 5P terminal		Video output : Coaxial cable pig-tail type AC24V/DC12V Input : 2 core wire pig-tail type Monitor output : RCA	
Accessories	Instruction Manual C-Mount Adapter Auto Iris Connector (E4-191J-100 or Equivalent)			Instruction Manual External Setup Board Option : XHG-A3029 Ceiling Mount Adapter		

Dimensions:mm



* This product is made of ECO friendly components based upon the Company policy and Corporate Social Responsibility to help Global Environmental solution for energy conservation and environmental sustainability, and all the components used in this product are Non-hazardous, Toxic Free, Non-Lead materials and parts conforming with Japan's Green Product Regulation, EU's RoHS Directive, and other environmental and hazardous chemical substances related regulations and laws.

Design and specifications are subject to change without notice.



*NTSC versions are not available with CE Mark.



U135A074H15

Ikegami Tsushinki Co.,Ltd.

■ URL : <http://www.ikegami.co.jp/en/>

Head Office

5-6-16 Ikegami, Ohta-ku, Tokyo 146-8567, Japan TEL.+81-(0)3-5700-1111 / FAX.+81-(0)3-5700-1137

Overseas Sales Division

5-6-16 Ikegami, Ohta-ku, Tokyo 146-8567, Japan TEL.+81-(0)3-5700-4117 / FAX.+81-(0)3-5700-4120

Ikegami Electronics (Europe) GmbH

■ URL : <http://www.ikegami.de>
<http://www.ikegami.co.uk>

Headquarters

Ikegami Strasse 1, D-41460 Neuss, Germany TEL.+49-(0)2131-1230 / FAX.+49-(0)2131-102820

UK CUSTOMER SUPPORT HELP LINE TEL.+44-(0)560-043-3769



Accredited by the Dutch Council for Certification